

HORNE SHOWER PANEL WITH DUAL CONTROL SHOWER VALVE and SWIVEL SHOWER HEAD

Includes integral Type 3 Approved thermostatic shower valve pre-plumbed within a white epoxy-polyester powder-coated aluminium panel with dual hand controls and easy clean swivel shower head in chromium plated finish.



FEATURES & BENEFITS

- Durable, anodised and powder coated (RAL 9010) panel and robust fittings ensure long lifespan
- Fully pressure and performance tested pre-plumbed assembly
- Integral healthcare-approved shower valve - dual control
- Easy clean swivel shower head
- 8 L/min flow regulator for water and energy conservation
- Highly suitable for retrofit applications
- Fast and easy installation
- Low level integral isolating service valves for ease of maintenance and performance testing
- Optional accessory:
 - Pipe cover in same profile as panel

The TSV1-3 thermostatic shower valve is Type 3 and UK Water Regulation 4 Approved.



Dimensions in mm

Original Drawing Ref: 10339

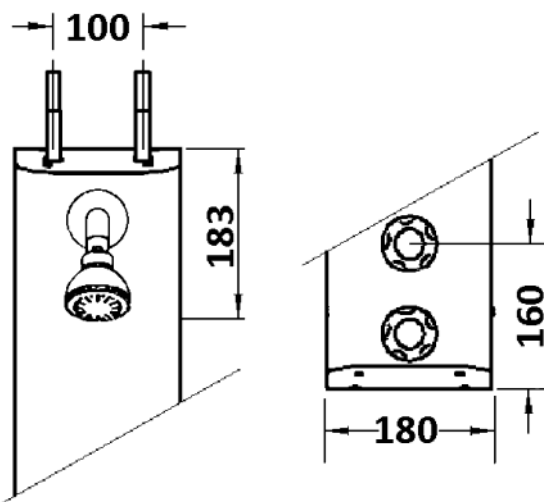
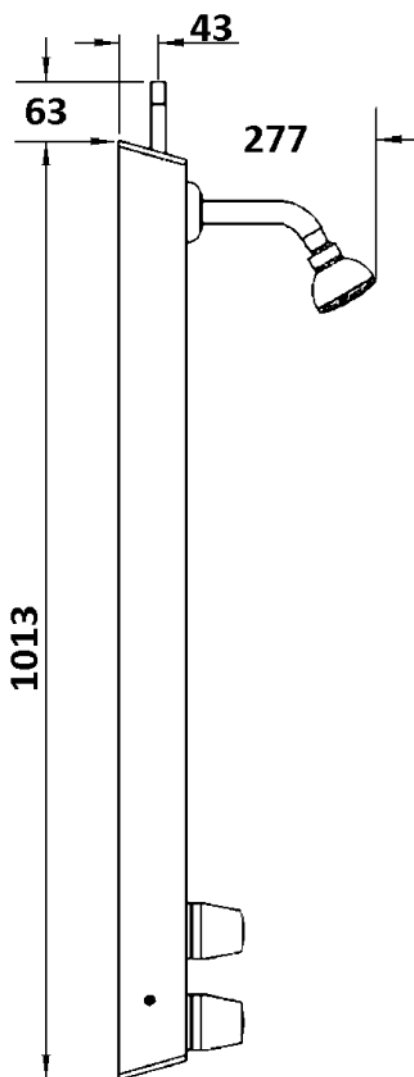
The **T106A** shower panel is pre-plumbed with an integral Type 3 approved thermostatic mixing valve, which features:

- Integral fine mesh strainers provide essential protection to the internal mechanism of the valve & ancillary fittings
- Angle pattern inlets enable easy access to the strainers
- Integral check valves prevent cross migration of water supplies
- Flushing facility to allow water supplies to be flushed clean during commissioning

Operating Conditions (Type 3 TMV):

- Range of temperature adjustment up to a pre-set maximum, usually 41°C at the showerhead
- Range of hot water supply temperature: 55 — 65°C
- Maximum static pressure: 10 bar
- Minimum differential between hot water temp. and mixed water temp.: 5°C
- Range of maintained water supply pressures: 0.2 — 5 bar

Unequal pressures are usually acceptable if gravity-pressure supplies one of the inlets: minimum 0.2 Bar. When both supplies are pumped, pressures should be nominally balanced.



HORNE ENGINEERING LTD, PO BOX 7, Rankine Street, Johnstone, PA5 8BD.
Tel: +44 (0)1505 321455 Fax: +44 (0)1505 336287
Email: sales@horne.co.uk web: www.horne.co.uk



Certificate No. FM 1224