

### HORNE TSV1 SHOWER PANEL WITH DUAL CONTROL THERMOSTATIC SHOWER VALVE, ILTDU AND PIPE COVER

Includes Type 3 Approved thermostatic shower valve pre-plumbed within a white epoxy-polyester powder coated aluminium panel with hand controls, single function handset, hose and riser rail, integral **In-line Thermal Disinfection Unit** and 940mm Pipe Cover.



### FEATURES & BENEFITS

- Durable, anodised and powder-coated (RAL 9010, LRV=84) panel & robust fittings ensure long lifespan
- Pressure & performance tested pre-plumbed assembly
- Integral healthcare-approved dual control shower valve with standard controls
- In-Line Thermal Disinfection Unit with easy operation for periodic disinfection of pipework, valve and downstream fittings using local hot water supply
- 940mm Pipe Cover in same profile as panel with key access point for ILTDU operation
- Robust riser rail in with inclusive design handset holder
- Single function handset with 1.25m easy-clean and anti-kink hose (PVC liner)
- Integral 8 L/min flow regulator for water and energy conservation
- Low-level integral servicing valves for ease of maintenance and performance testing
- Fast and easy installation, for new or retrofit applications
- Optional accessory: 2 metre hose - part number SA-108B

The TSV1-3 thermostatic shower valve is Type 3 and UK Water Reg 4 Approved.  
The integral ILTDU is UK Water Reg 4 Approved.



The **T108T9** shower panel is pre-plumbed with an integral dual control Type 3 approved thermostatic mixing valve, which features:

- Low-level isolating servicing valves
- Integral fine mesh strainers provide essential protection to internal mechanism of the valve and ancillary fittings
- Angle pattern inlets enable easy access to the strainers
- Integral check valves prevent cross migration of water supplies
- Flushing facility to allow water supplies to be flushed clean during commissioning

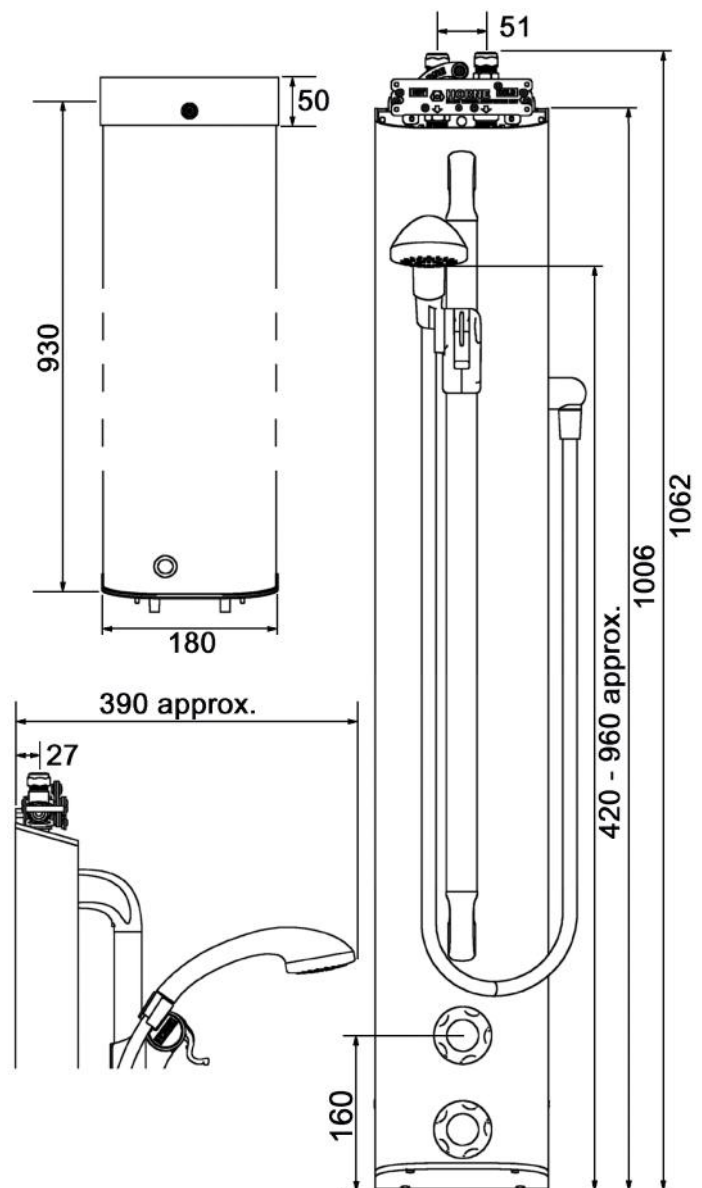
### Operating Conditions (Type 3 TMV):

- Range of temperature adjustment up to pre-set maximum, usually 41°C at the shower head
- Range of hot water supply temperature: 55 — 65°C
- Maximum static pressure: 10 bar
- Minimum differential between hot water temp. and mixed water temp.: 5°C
- Range of maintained water supply pressures: 0.2 - 5 bar

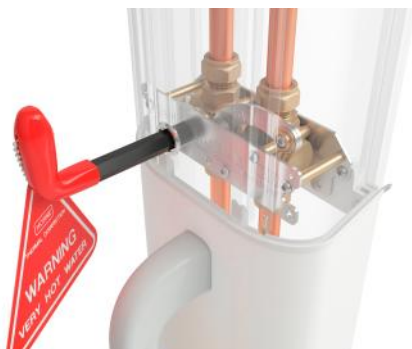
*Unequal pressures are usually acceptable if gravity-pressure supplies one of the inlets: minimum 0.2 Bar. When both supplies are pumped, pressures should be nominally balanced.*

Dimensions in mm

Original Drawing Ref: 11351



TOTAL HEIGHT OF PANEL + PIPECOVER  
= 1006 + 2 + 930 + 50 - ( OVERLAP )  
- OVERLAP IS VARIABLE, 20-40mm  
- 930 LENGTH CAN BE CUT TO SUIT



### Thermal Disinfection using the ILTDU

For an explanation of its operating principals and further information on the recommended disinfection procedure, please refer to our ILTDU brochure and instructions.