

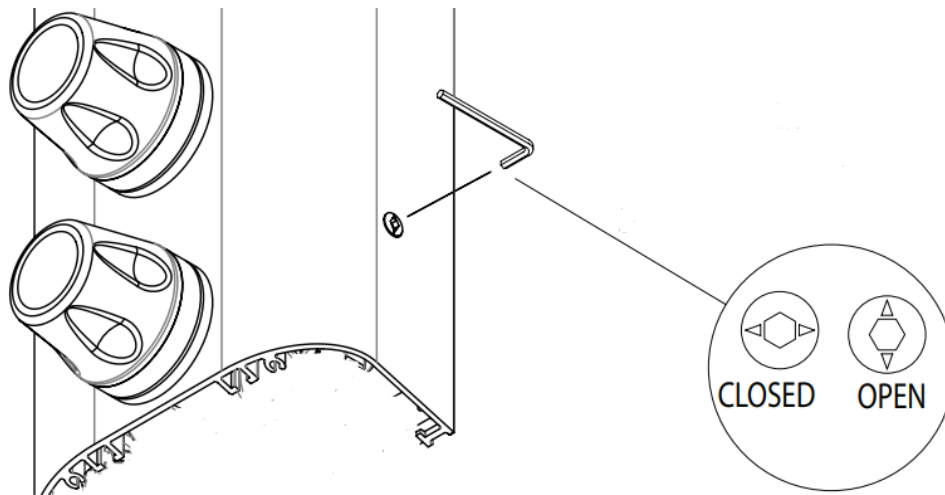


Horne Engineering Ltd
PO Box 7, Rankine Street
Johnstone, Renfrewshire, PA5 8BD
Tel: 01505 321455
technical@horne.co.uk
www.horne.co.uk

HORNE SHOWER VALVE

ISOLATION COUPLING REMOVAL INSTRUCTIONS

THIS DOCUMENT PROVIDES STEP-BY-STEP INSTRUCTIONS TO REMOVE THE LOW-LEVEL ISOLATION COUPLINGS FROM HORNE TSV1 SHOWER PANELS THAT, IN TURN, ALLOWS COMPLETE REMOVAL OF THE INTERNAL TSV1-3, TSV-TFC OR HORNE 15 MIXING VALVE:



WATER SUPPLIES MUST BE ISOLATED, PIPEWORK DISCONNECTED, AND THE PANEL REMOVED FROM THE WALL TO PERFORM THIS PROCEDURE

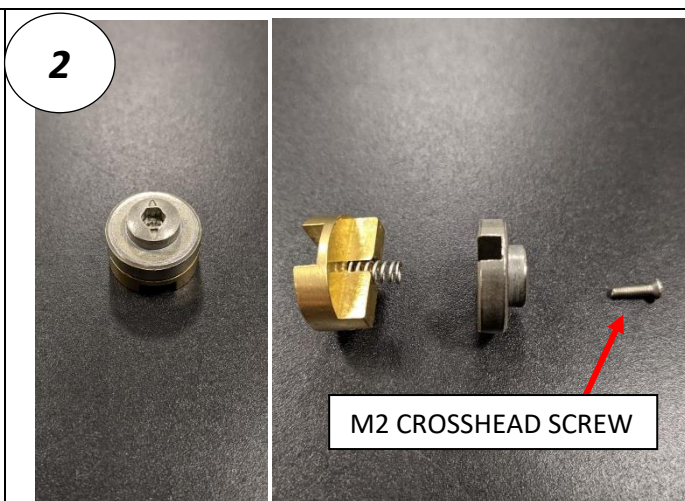
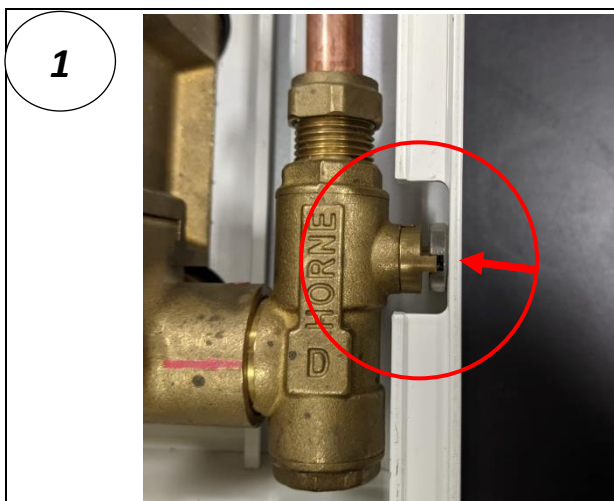
NOTE THAT COUPLINGS ARE INSTALLED AND UNINSTALLED USING AN M2 SCREW – THIS IS USED FOR ASSEMBLY PURPOSES ONLY, AND SHOULD BE REMOVED IN SERVICE TO ALLOW THE ISOLATION VALVES TO WORK SATISFACTORILY.

SPARES ARE AVAILABLE DIRECT FROM HORNE ENGINEERING:

M2 SCREW -PART No. 41-5667

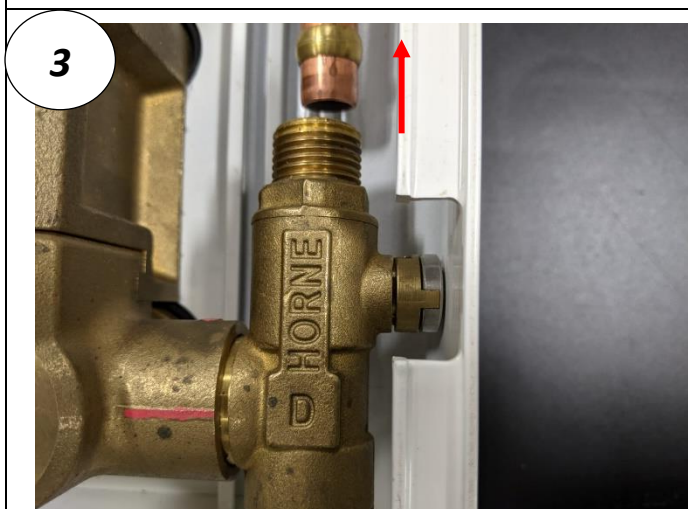
COMPLETE COUPLING ASSEMBLIES - PART No.43-5663 (includes above M2 screw).

Low-level Isolation valve – Coupling Removal Instructions



WITH THE PANEL DISMOUNTED, IDENTIFY THE COUPLINGS AT EACH INLET STRAINER ASSEMBLY.

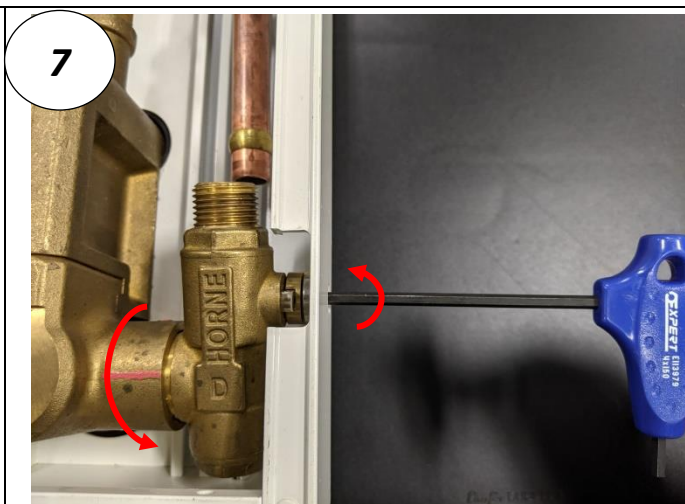
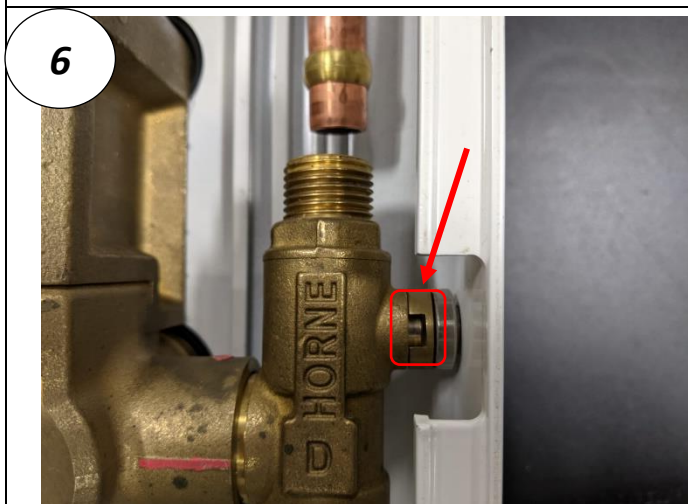
THE COUPLINGS ARE MADE OF 3 COMPONENTS. AN M2 SCREW RETAINS THE COMPONENTS TOGETHER AS AN ASSEMBLY, WHEN OUTWITH THE PANEL.



INLET PIPEWORK SHOULD BE DISCONNECTED, AND MOVED CLEAR OF THE STRAINER BODY.

TIGHTEN THE M2 SCREW THROUGH THE COUPLING BODIES. THE SPRING SHOULD COMPRESS, AND THE TWO PARTS SHOULD CLOSE TOGETHER. *

*** NOTE: IT MAY BE NECESSARY TO ROTATE THE COUPLING ASSEMBLY (STEP 6), OR MANIPULATE THE STRAINER BODY (STEP 7) PRIOR TO JOINING THE TWO HALVES WITH THE M2 SCREW, DEPENDANT ON ALIGNMENT.**

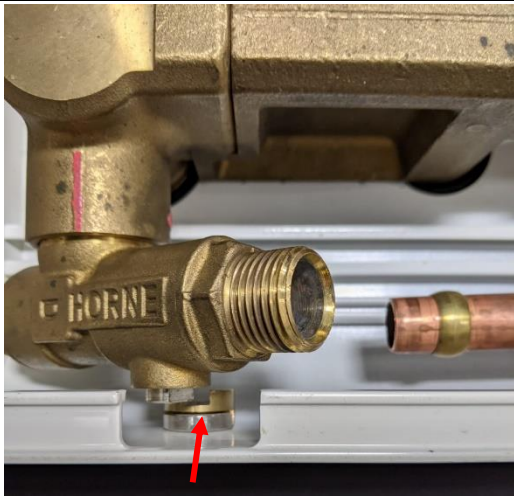


TURN THE COUPLING USING A 4mm HEX KEY SUCH THAT THE SLOT CLOSEST TO THE VALVE IS FACING UPWARD TOWARD THE PANEL CUT OUT.

SWIVEL THE STRAINER BODY AWAY FROM THE COUPLING SLOT. MANIPULATE THE COUPLING ORIENTATION AS NECESSARY WITH HEX KEY.

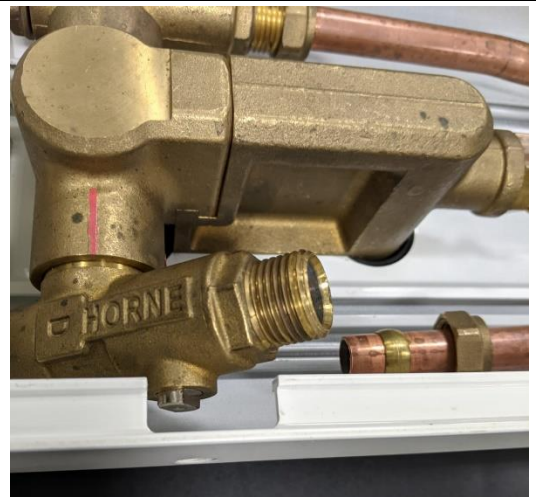
Low-level Isolation valve – Coupling Removal Instructions

8



SWIVEL THE BODY SO THAT IT IS COMPLETELY FREE FROM THE COUPLING – THE COUPLING CAN THEN BE REMOVED.

9



REPEAT THIS PROCEDURE FOR OTHER COUPLING. RETAIN THE COUPLING ASSEMBLIES, AND REVERSE THESE STEPS TO REINSTALL WHEN REQUIRED.

TO COMPLETELY REMOVE THE SHOWER/MIXING VALVE FROM THE PANEL (FOR DESCALING FOR EXAMPLE), THE OUTLET PIPE SHOULD BE DISCONNECTED. FOR TSV1-3 AND TSV-TFC TYPE SHOWER VALVES, THE FRONT FACING USER CONTROLS SHOULD ALSO BE REMOVED, AND ANY CLAMP RINGS UNSCREWED.

***PLEASE CONSULT YOUR HORNE SHOWER PANEL ICOMs
FOR FURTHER DISASSEMBLY INSTRUCTIONS***