

The logo for HORNE, featuring the word "HORNE" in a bold, white, sans-serif font with a registered trademark symbol (®) to the right of the letter "E". The text is centered on a solid teal rectangular background.

Horne Engineering Ltd
PO Box 7, Rankine Street
Johnstone, Scotland, PA5 8BD
t: +44 (0)1505 321455
f: + 44 (0)1505 336287
e: technical@horne.co.uk
w: horne.co.uk

**Horne 50 Thermostatic Mixing Valve
Spares Kits and Components
(for item numbers refer to drawing no 7368 on page 3)**

Kits

| Part Number | Description |
|-------------|---|
| 5245 | Full Seals Kit |
| 5247T1 | Spares Kit 15-32°C – contains items below marked* |
| 5249T2 | Spares Kit 32-52°C – contains items below marked* |
| 5251T3 | Spares Kit 45-62°C – contains items below marked* |
| 5253T4 | Spares Kit 58-80°C – contains items below marked* |
| 23-4547 | NRV Inserts Hot & Cold |
| 20-4461 | NRV Housing |

Valve Components

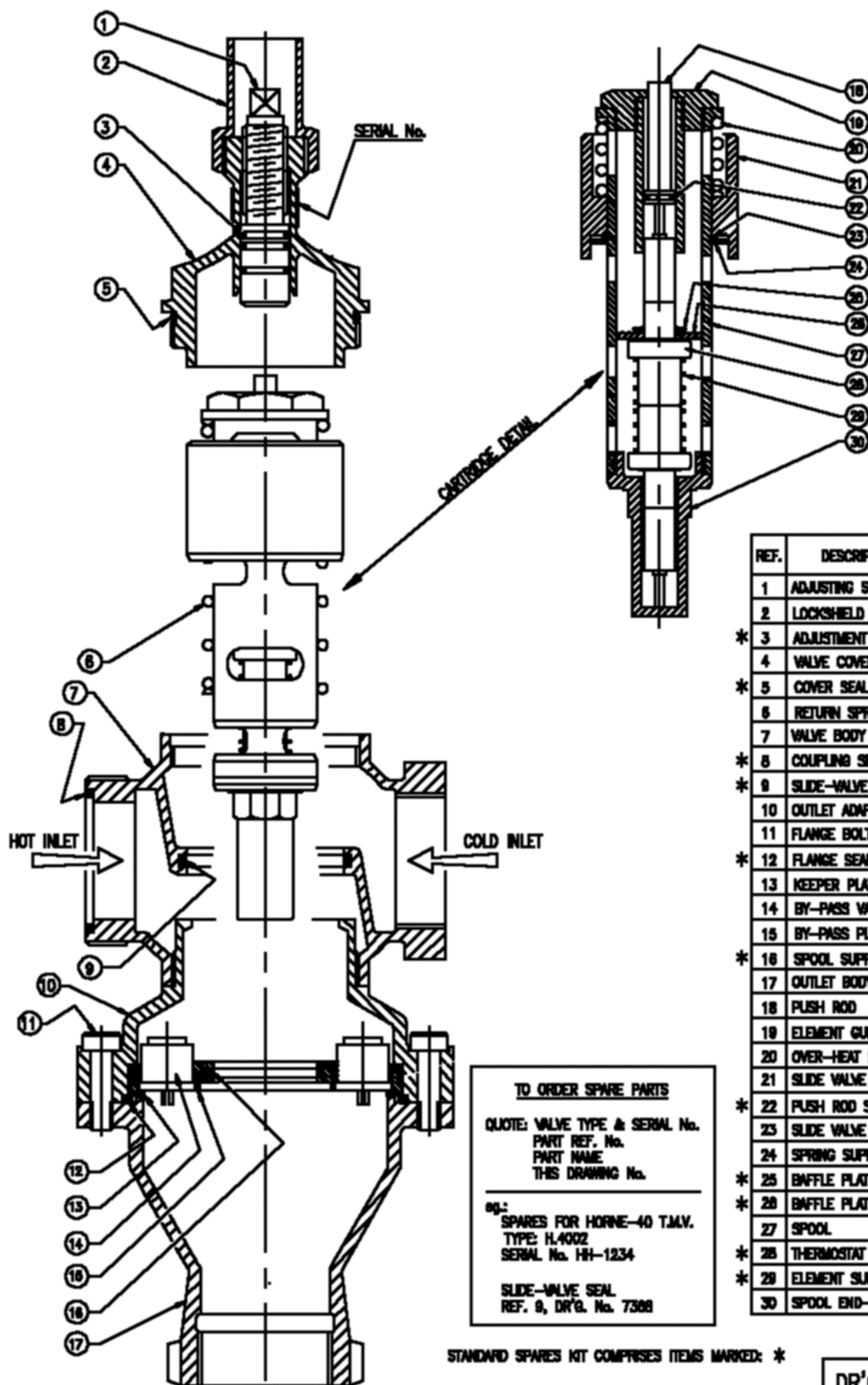
| Part No | Drawing Ref | Description |
|----------|-------------|---|
| 20-4466 | 1 | Adjusting Screw |
| 21-1180 | 2 | Lockshield Nut |
| 42-4536 | 3* | Adjustment Seal (3 required per valve) |
| 20-4465 | 4 | Valve Cover |
| 42-2482D | 5* | Cover Seal |
| 40-4765 | 6 | Return Spring |
| 20-4784 | 7 | Valve Body (Not supplied as spare part) |
| 42-3480 | 8* | Coupling Seal |
| 42-2466E | 9* | Slide Valve Seal |
| 42-2467E | 9* | 2 nd Slide Valve Seal (both required) |
| 20-4779 | 10 | Outlet Adaptor |
| 41-4766 | 11 | Flange Bolt (8 required per valve) |
| 42-4767 | 12 | Flange Seal |
| 20-4778 | 13 | Keeper Plate |
| 23-4770 | 14 | By-Pass Valve (NRV) (6 required per valve) |
| 20-4781 | 15 | By-Pass Plate |
| 42-4688 | 16 | Spool Support Ring |
| 20-4782 | 17 | Outlet Body |
| 20-4786 | 18 | Push Rod |
| 20-4787 | 19 | Element Guide Housing |
| 20-4588 | 19 | Element Guide Tube (These 2 parts make the Element Guide) |
| 40-4473 | 20 | Over-Heat Spring |

| | | |
|-----------|----------|--|
| 20-4792 | 21 | Slide Valve |
| 42-4521 | 22* | Push Rod Seal |
| 41-4475 | 23 | Slide Valve Retainer |
| 20-4477 | 24 | Spring Support Washer |
| 41-4492 | 25* | Baffle Plate Retainer |
| 20-4479 | 26* | Baffle Plate |
| 60-4794 | 27 | Spool |
| 6581T1 | 28* | Thermostatic Element (15 to 32°C) |
| 6582T2 | 28* | Thermostatic Element (32 to 52°C) |
| 6583T3 | 28* | Thermostatic Element (45 to 62°C) |
| 6584T4 | 28* | Thermostatic Element (58 to 80°C) |
| 40-4476 | 29 | Element Support Spring |
| 20-4478 | 30 | Spool End Cap |
| | | |
| | | |
| 71-4677T1 | 18 to 30 | Cartridge Detail (Spool Assembly 15 to 32°C) |
| 71-4655T2 | 18 to 30 | Cartridge Detail (Spool Assembly 32 to 52°C) |
| 71-4655T3 | 18 to 30 | Cartridge Detail (Spool Assembly 45 to 62°C) |
| 71-4655T4 | 18 to 30 | Cartridge Detail (Spool Assembly 58 to 80°C) |
| | | |
| | | Standard Spares Kit Comprises Items Marked * |

THERMOSTATIC MIXING VALVE

{ H-40, TYPE: H.4002 }
 { H-50, TYPE: H.5002 }

PARTS LIST



| REF. | DESCRIPTION |
|------|------------------------|
| 1 | ADJUSTING SCREW |
| 2 | LOCKSHIELD NUT |
| * 3 | ADJUSTMENT SEAL (3) |
| 4 | VALVE COVER |
| * 5 | COVER SEAL |
| 6 | RETURN SPRING |
| 7 | VALVE BODY |
| * 8 | COUPLING SEAL |
| * 9 | SLIDE-VALVE SEAL |
| 10 | OUTLET ADAPTOR |
| 11 | FLANGE BOLT (8) |
| * 12 | FLANGE SEAL |
| 13 | KEEPER PLATE |
| 14 | BY-PASS VALVE (8) |
| 15 | BY-PASS PLATE |
| * 16 | SPOOL SUPPORT RING |
| 17 | OUTLET BODY |
| 18 | PUSH ROD |
| 19 | ELEMENT GUIDE |
| 20 | OVER-HEAT SPRING |
| 21 | SLIDE VALVE |
| * 22 | PUSH ROD SEAL |
| 23 | SLIDE VALVE RETAINER |
| 24 | SPRING SUPPORT WASHER |
| * 25 | BAFFLE PLATE RETAINER |
| * 26 | BAFFLE PLATE |
| 27 | SPOOL |
| * 28 | THERMOSTAT ELEMENT (2) |
| * 29 | ELEMENT SUPPORT SPRING |
| 30 | SPOOL END-CAP |

TO ORDER SPARE PARTS
 QUOTE: VALVE TYPE & SERIAL No.
 PART REF. No.
 PART NAME
 THIS DRAWING No.
 eg.:
 SPARES FOR HORNE-40 T.M.V.
 TYPE: H.4002
 SERIAL No. HH-1234
 SLIDE-VALVE SEAL
 REF. 9, DR'G. No. 7368

STANDARD SPARES KIT COMPRISES ITEMS MARKED: *

DR'G. No. 7368