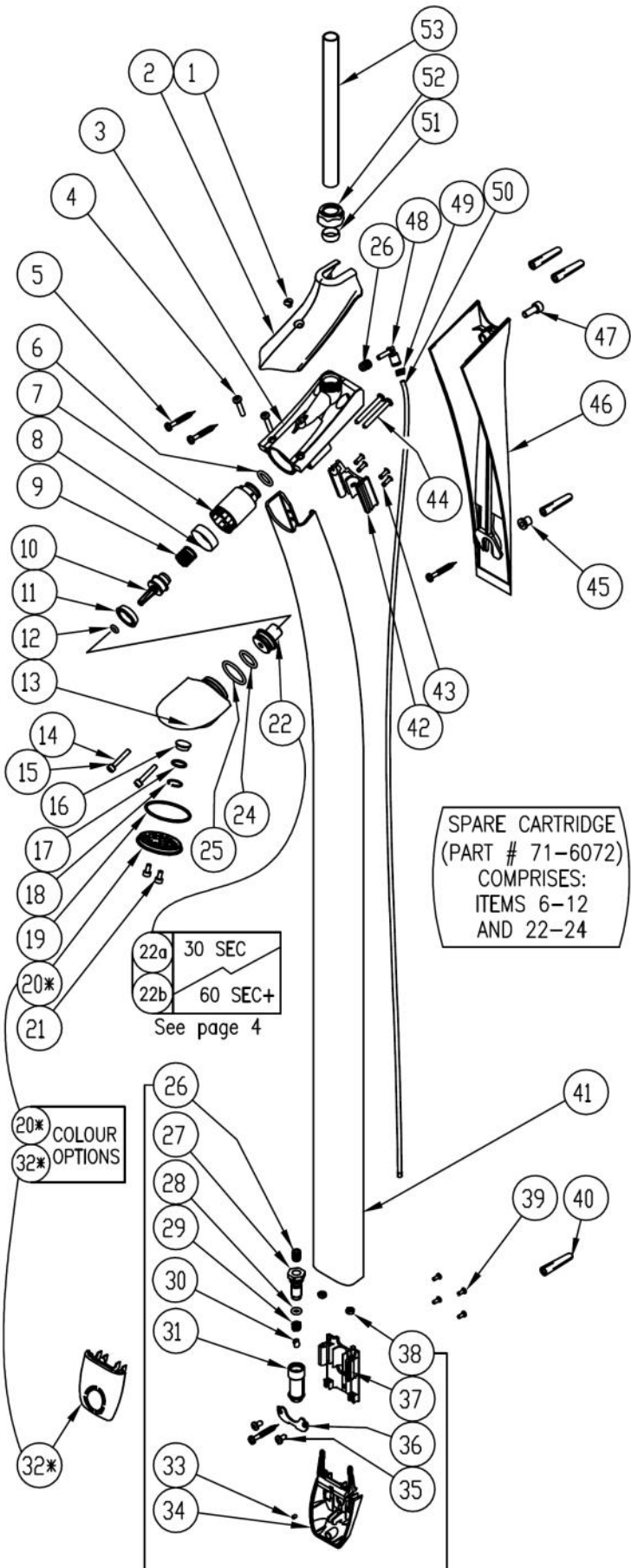


HORNE DUŠO SHOWER COLUMN - SPARE PARTS



SPARE CARTRIDGE
 (PART # 71-6072)
 COMPRISES:
 ITEMS 6-12
 AND 22-24

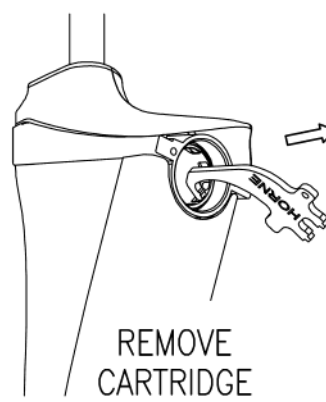
22a 30 SEC
 22b 60 SEC+
 See page 4

20* COLOUR
 32* OPTIONS

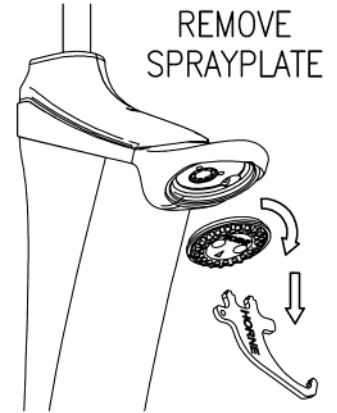
SPARE PADDLE (71-6074) COMPRISES 26-31 & 33-38



CHANGE
 CARTRIDGE
 (P/N: 71-6072)
 EVERY 3 YEARS

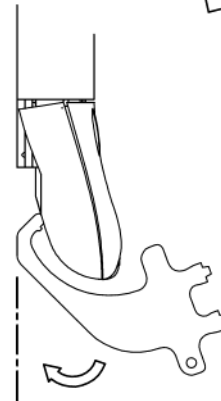


REMOVE
 CARTRIDGE

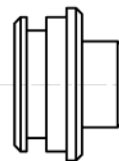
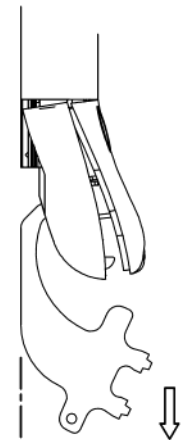


REMOVE
 SPRAYPLATE

SPECIAL TOOL
 P/N: 21-6071



REMOVE
 COVER



22a (~30 SEC)
 P/N: 23-6073



22b (60 SEC+)
 P/N: 23-6043

Please refer to the drawing overleaf for balloon numbers. For unlisted balloon numbers please contact the factory on 01505 321455 to obtain part number, making sure you refer to our drawing number D11314 Rev 3.

ITEM NUMBER	DESCRIPTION	PART NUMBER
n/a	Release tool	21-6071
20	Spray plate assembly - Black	71-5998
20	Spray plate assembly - Aqua Blue	71-5998-AB
20	Spray plate assembly - Grey	71-5998-VG
20	Spray plate assembly - Pearl	71-5998-AP
20	Spray plate assembly - Yellow	71-5998-CY
19	Spray plate O-ring seal	42-5996
21	Spray plate retaining screw (2 required)	41-5891
32	Actuator paddle cover - Black	23-6038
32	Actuator paddle cover - Aqua Blue	23-6038-AB
32	Actuator paddle cover - Grey	23-6038-VG
32	Actuator paddle cover - Pearl	23-6038-AP
32	Actuator paddle cover - Yellow	23-6038-CY
6-12, 22-24	Spare Timed Flow Control (TFC) cartridge assembly 60 second duration	71-6072
6-12, 22-24	Spare Timed Flow Control (TFC) cartridge assembly 30 second duration	71-6119
22a	Obturator seat - 30 second duration	23-6073
22b	Obturator seat - 60 second duration	23-6043
26-38	Paddle assembly	71-6074
2	Top cover	23-6056
1	Top cover retaining screw	23-6056