

APPLICATIONS

Thermostatic mixing of hot and cold water to provide safe and comfortable water, typically to a group of taps or showers at a controlled temperature over a wide range of flow rates. DN25 TMV for connection to 28mm copper pipe.

KEY FEATURES

- Every valve performance tested in production
- Accurate and reliable temperature control
- Automatic shut down if hot or cold water supply fails
- Full bore fine mesh strainers help protect internal valve mechanism and all downstream fittings
- Easy installation, commissioning and maintenance
- Available with hygiene white plastic anti-tamper cover
- WRAS approved



HORNE 25 with integral check valves and strainers



HORNE 25 with integral check valves, strainers and wall mounting bracket.

SPECIFICATION REFERENCES

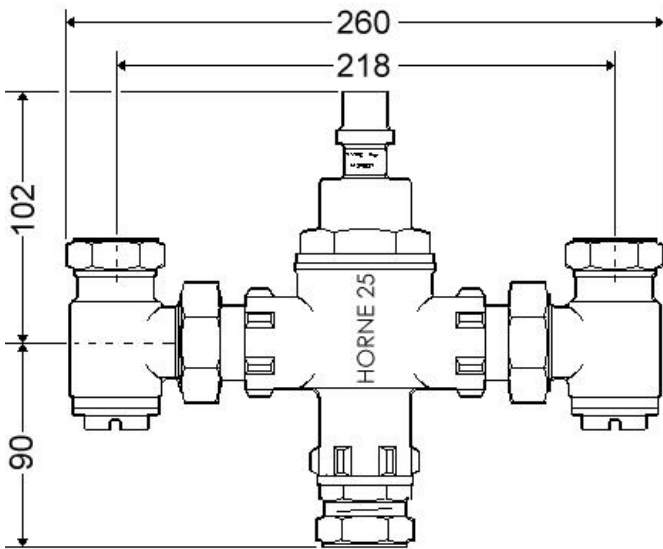
The Horne 25 is available in either bronze (B) or chrome (C) finish in the following configurations:

HORNE 25 TMV	PRODUCT REF
WITH integral check valves and strainers.....	H25-11B H25-11C
PLUS wall mounting kit.....	H25-12B H25-12C
PLUS white plastic cover.....	H25-13B H25-13C

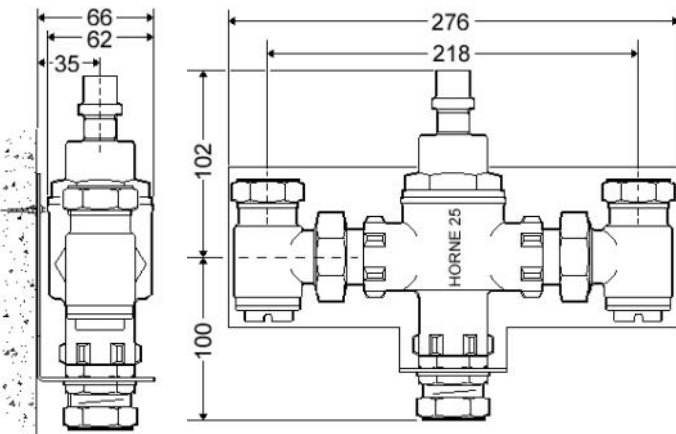


HORNE 25 with integral check valves, strainers, wall mounting bracket and white plastic cover.

DIMENSIONS

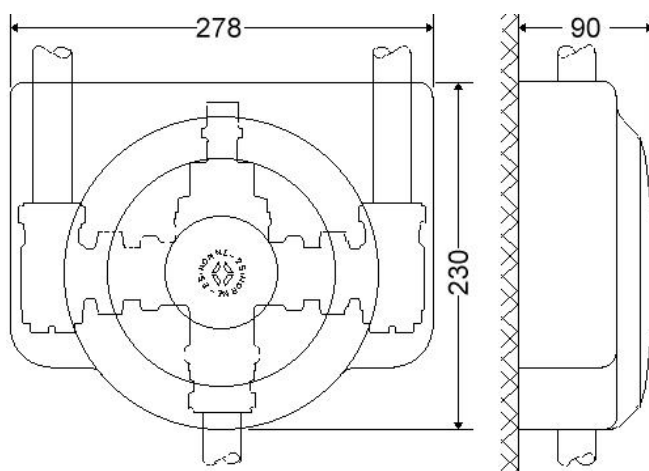


H25 -11B / C



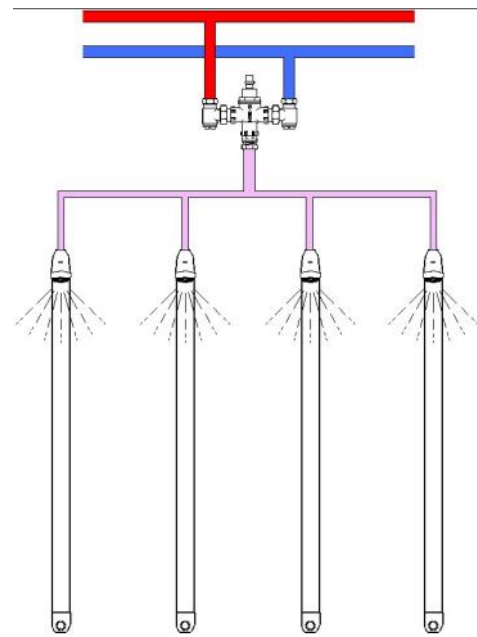
PROFILE

H25-12B / C



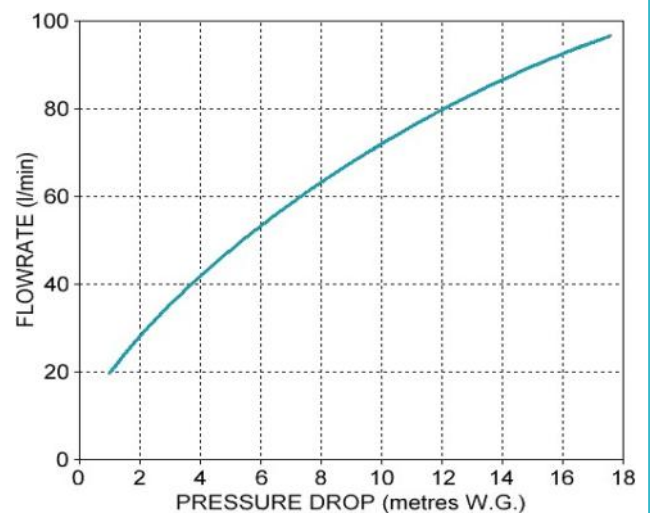
H25-13B / C

TYPICAL INSTALLATION



A group of Horne Dušo shower columns supplied with mixed warm water from a Horne group TMV.

SIZING CHART



OPERATING PARAMETERS

Temp. setting at factory	41°C
Range of temp. adjustment	25 - 50°C
Range of hot water supply temp.	55 - 85°C
Minimum differential between hot water temp. and mixed water temp.	12°C
Maximum static pressure	10 bar
Range of maintained water supply pressures	0.2 - 5 bar
Note: supply pressures should be approximately equal.	