



Horne Engineering Ltd  
 PO Box 7  
 Rankine Street  
 Johnstone  
 SCOTLAND  
 PA5 8BD  
 Tel: +44 (0)1505 321455  
 Fax: +44 (0)1505 336287  
 Email:sales@horne.co.uk

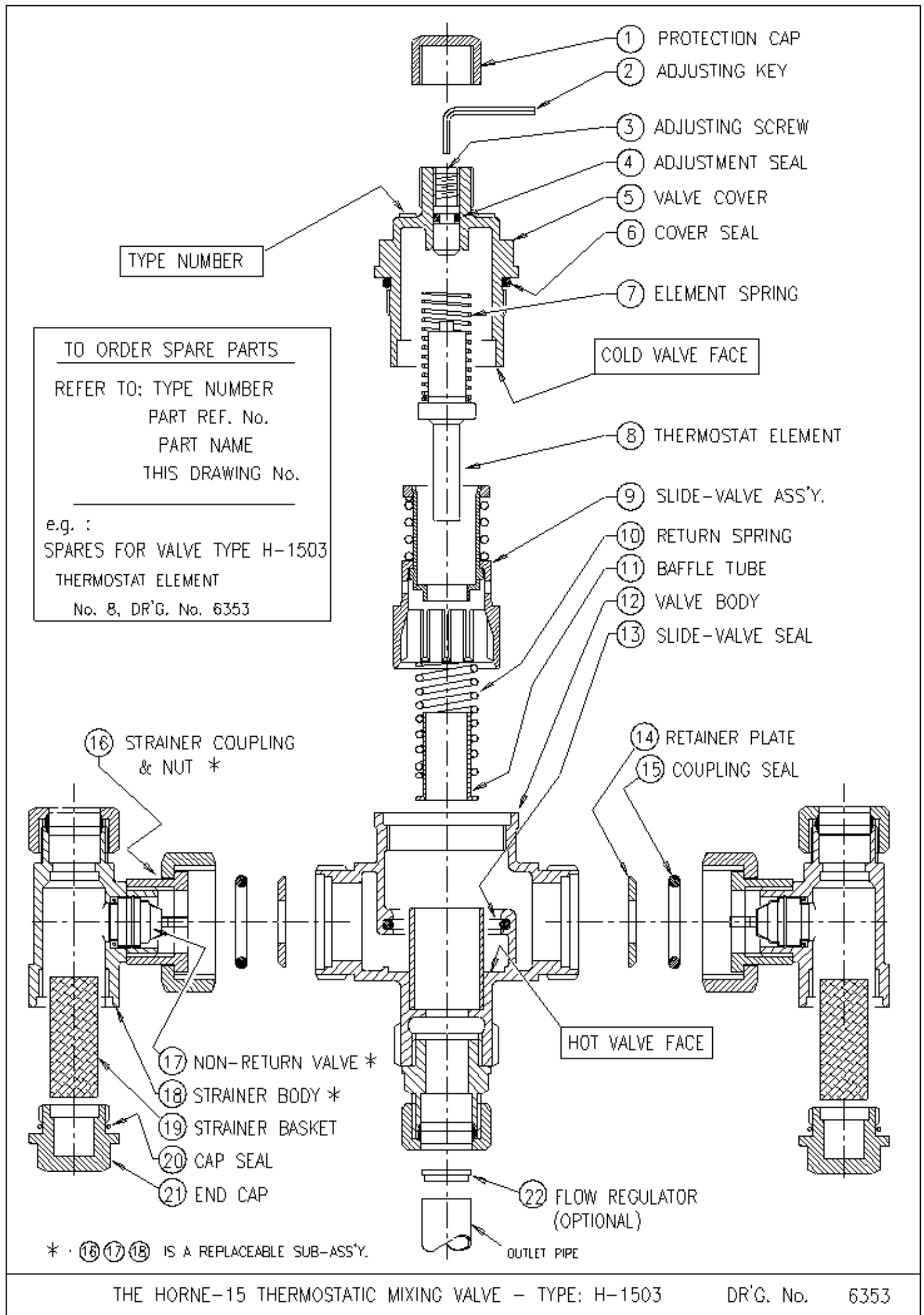
**HORNE 15 THERMOSTATIC MIXING VALVE**

**SPARES PARTS, ACCESSORIES and MAINTENANCE TOOLS/KITS**

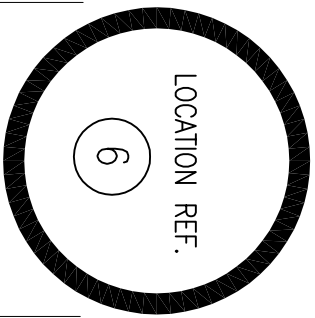
DESCRIPTION	PART NUMBER
<b>Horne H1501 &amp; H1502 (Legacy)</b>	<b>Drawings 5367 &amp; 5385 (pre-1997)</b>
Element & Spring .....	4640
Seals Kit.....	4121
Spares Kit.....	4122
<b>Horne H1503</b>	<b>Drawings 7324 &amp; 6353 (Since July 1997)</b>
Element & Spring.....	4579
Seals Kit.....	4638
Spares Kit...(see drawing on page 4 for contents).....	4639
Flow Regulator.....	43-4449
Slide Valve Seal.....	42-3849
'B' Type Strainer Basket (inlets have plastic ball-valve levers)	43-4753
'D' & 'E' Type Strainer Basket.....	43-5019
Cap Seals (B-Type inlets).....	42-4591
Cap Seals (E-Type inlets).....	42-3765
Slide Valve Assembly.....	71-4190
Return Spring.....	40-3846
Baffle Tube.....	23-3842
Inlet Assembly, E-Type*, non-Isolating, Bronze.....	44-5030
Inlet Assembly, E-Type*, non-Isolating, Chrome.....	44-5030C
Inlet Assembly, E-Type*, Isolating, Bronze.....	44-5021
Inlet Assembly, E-Type*, Isolating, Chrome.....	44-5021C
Inlet Assembly, E-Type*, Isolating & 4 <sup>th</sup> Connection, Bronze	4883
Inlet Assembly, <b>D-Type</b> , Isolating & 4 <sup>th</sup> Connection, Chrome.	44-5022C
Replacement Valve Cover Assembly (H1503).....	71-6167
Populated H1503 Bronze.....	4447
Populated H1503 Chrome.....	4447C

\* E-Type inlets differ in dimensions from D-Type inlets. Please refer to [Dimension Drawings](#).

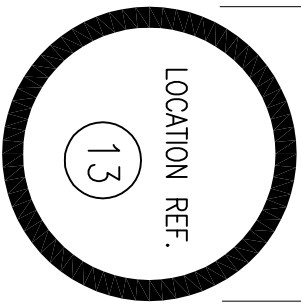
<b>Horne H1504</b>	
Element & Spring.....	4876
Seals Kit.....	4875
Spares Kit.....	4877
<b>Tools and Accessories</b>	
Seal Removal Tool	4411
Lapping Mandrel	5395
H15 / H20 Reconditioning Kit	6547
Flushing Kit (D & E-Type Inlet Assemblies)	5138
Flushing Kit (B-Type Inlet Assemblies)	5375F
Cover Kit (H15 Bronze w/o 4 <sup>th</sup> Connection)	4131C
Cover Kit (H15 Chrome w/o 4 <sup>th</sup> Connection to cold tap)	4131C/C
Cover Kit (H15 with 4 <sup>th</sup> Connection to cold tap)	5238
Wall Mounting Kit	3971
Wall Mounting Kit (for Chrome finish)	3971C



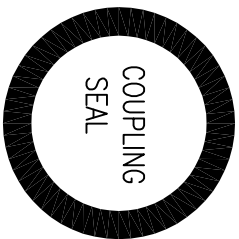
FOR LOCATION OF PARTS SEE DR'G. No. 6353



COVER SEAL



SLIDE-VALVE SEAL



LOCATION REF.

(15)



LOCATION REF.

(20)



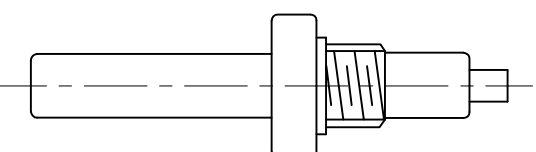
NOTE: FIT THE APPROPRIATE PAIR OF STRAINER CAP SEALS. THESE DEPEND UPON THE INLETS FITTED TO THE TMV. DISCARD THE CAP SEALS THAT ARE NOT REQUIRED.



LOCATION REF.

(4)

ADJUSTMENT SEAL

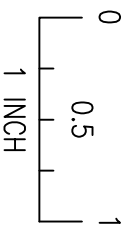


THERMOSTAT ELEMENT ASS'Y.

LOCATION REF.

(8)

O-RING IDENTIFICATION TEMPLATES



PART : SEALS KIT AND THERMOSTAT ELEMENT ASS'Y.

PRODUCT : HORNE-1503

SCALE	1=1
DRAWN	W.R. 11/1/99
CHECKED	
ISSUE	2

THE HORNE ENGINEERING CO. LTD.  
JOHNSTONE  
RENFREWSHIRE  
DR'G. No. 7324