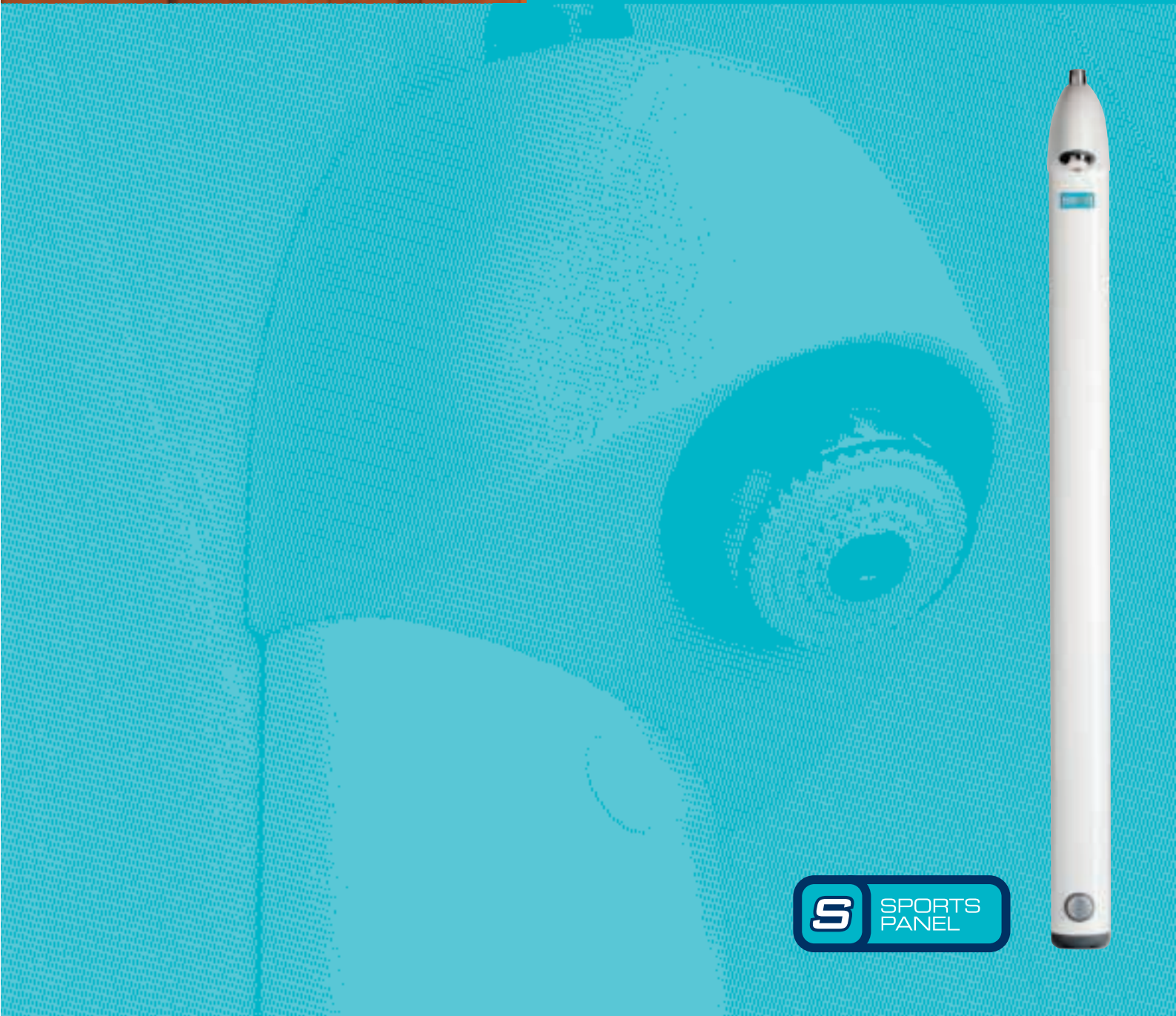
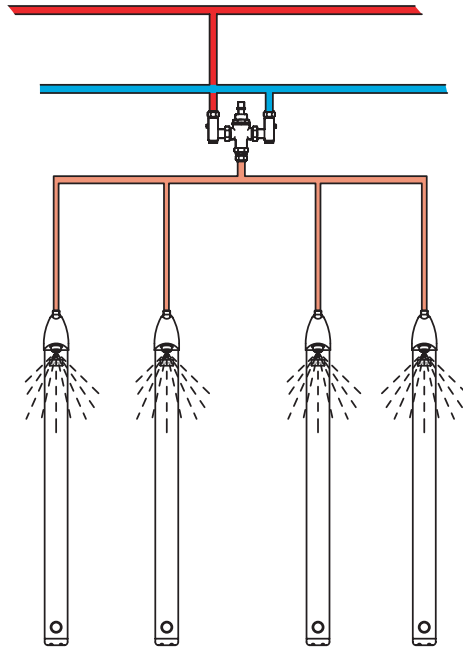
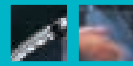


Uniclass L72511	Epic H31
CI/SEB (53.9)	X

SURFACE MOUNTED SHOWER PANEL





THE SPORTS PANEL

COMPACT

The compact shower panel features 30 second timed flow control and a built in vandal resistant head which allows surface mounted shower installation without any exposed pipework at user level.

ECONOMIC

Easy installation can be completed very quickly with minimal disruption. Further economies can be obtained from using the integral flow regulator which will save water and energy.

SAFE PACKAGE

The Sports Panel should be combined with a HORNE group thermostatic mixing valve to ensure safe and comfortable showering temperatures at all times.

ROBUST CONSTRUCTION

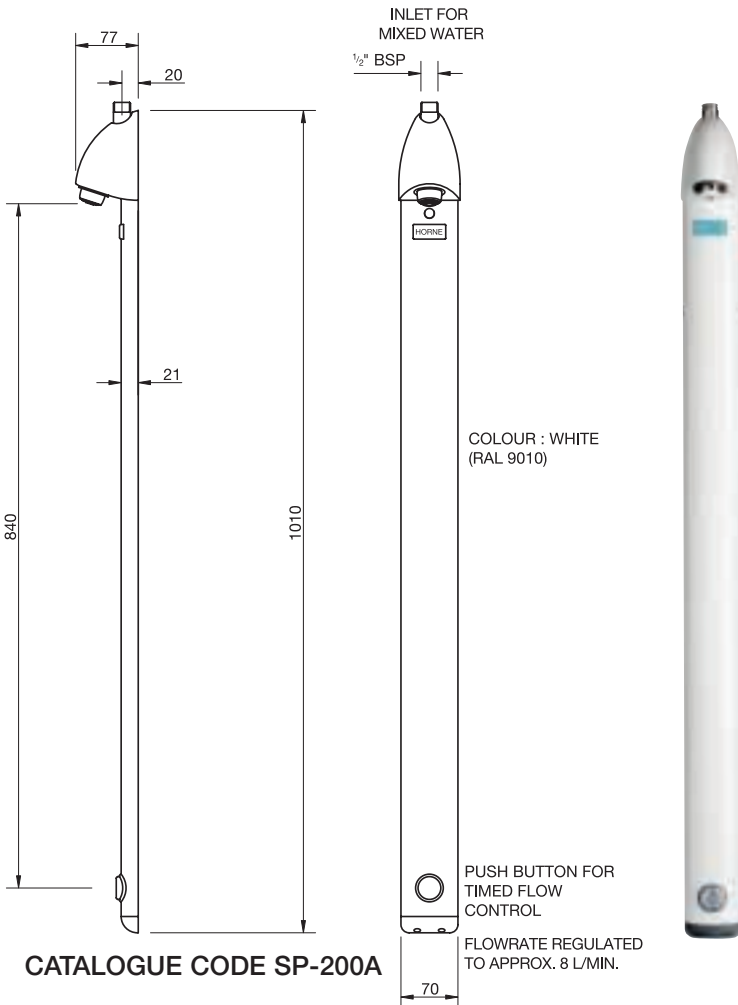
The panel column is constructed from a tough aluminium extrusion and the shower head is housed inside a robust casting, epoxy coated in RAL 9010 for durability.

SUPPLY PRESSURE

The minimum water pressure required to feed the HORNE Sports Panel is a dynamic head of 0.5 bar (5m head). Optimum performance is obtained between 0.8 bar and 5 bar water pressure. Note that the dynamic head is measured with the water running.

DESIGN CONSIDERATION

For installations that include shower trays, consideration should be given to the size and location of the tray to ensure that all spray is captured from the fixed shower head.



CATALOGUE CODE SP-200A

HORNE ENGINEERING HAVE BEEN DEVELOPING THERMOSTATIC TEMPERATURE CONTROL VALVES SINCE 1909.

HORNE ENGINEERING Ltd
 PO Box 7, Rankine Street
 Johnstone, Scotland PA5 8BD
 tel +44 (0) 1505 321455
 fax +44 (0) 1505 336287
 email sales@horne.co.uk
 web www.horne.co.uk